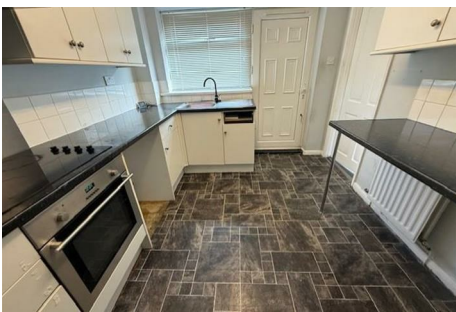


# GILMORE ESTATES

Property Sales & Lettings



## Ottercops

, Prudhoe, NE42 6LQ

\*\*\* THREE BEDROOMS \*\*\* MID TERRACED HOUSE \*\*\* DOUBLE GLAZED WINDOWS \*\*\* GARDEN \*\*\*  
GAS CENTRAL HEATING \*\*\* INVESTMENT OPPORTUNITY WITH CURRENT TENANTS \*\*\*

Investment opportunity for someone looking start or add to their portfolio. The property has current tenants in situ. The property is on coalfield.

EPC RATING A  
COUNCIL TAX BAND C

**£99,950**

# Ottercops

, Prudhoe, NE42 6LQ



- THREE BEDROOMS
- END TERRACE
- GAS CENTRAL HEATING
- FRONT AND REAR GARDENS
- DOUBLE GLAZED WINDOWS
- INVESTMENT OPPORTUNITY
- CURRENT TENANTS PAYING £585 PCM

## ENTRANCE HALL

## LOUNGE/DINING ROOM

11'6" x 24'5" (3.51 x 7.45)

## KITCHEN

9'1" x 12'0" (2.78 x 3.68)

## FIRST FLOOR LANDING

## BATHROOM

8'5" x 6'5" (2.57 x 1.97)

## BEDROOM ONE

12'11" x 8'9" (3.96 x 2.69)

## BEDROOM TWO

10'6" x 9'0" (3.22 x 2.76)

## BEDROOM THREE

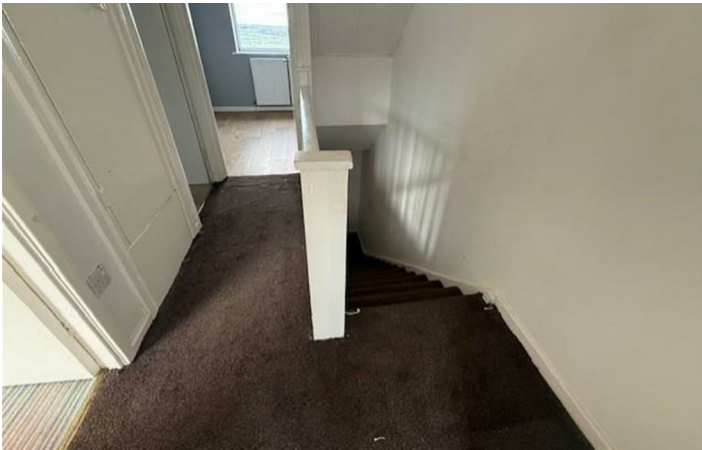
9'1" x 8'7" (2.79 x 2.64)

## EXTERNALLY

## GARAGE



[Directions](#)





# Floor Plan

These particulars, whilst believed to be accurate are set out as a general outline only for guidance and do not constitute any part of an offer or contract. Intending purchasers should not rely on them as statements of representation of fact, but must satisfy themselves by inspection or otherwise as to their accuracy. No person in this firm's employment has the authority to make or give any representation or warranty in respect of the property.

